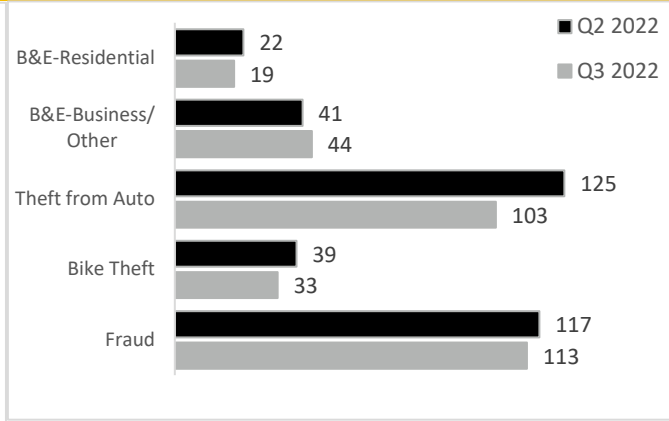
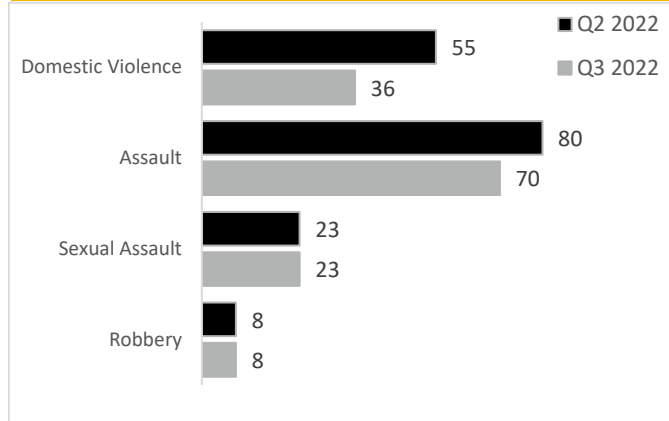




# SAANICH POLICE DEPARTMENT QUARTERLY REPORT TO THE COMMUNITY

## JULY TO SEPTEMBER 2022

### Violent Crime                      Property & Financial Crime                      Community Notes



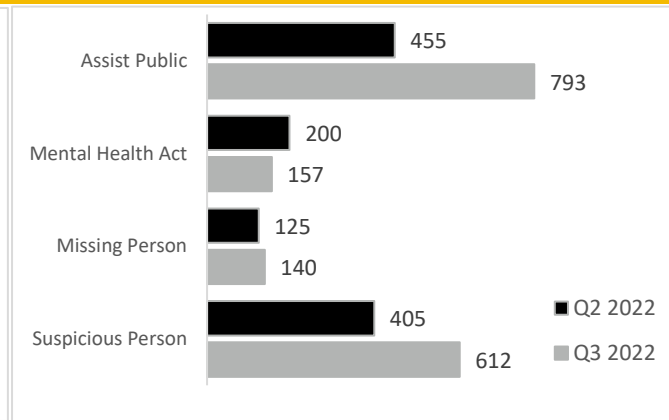
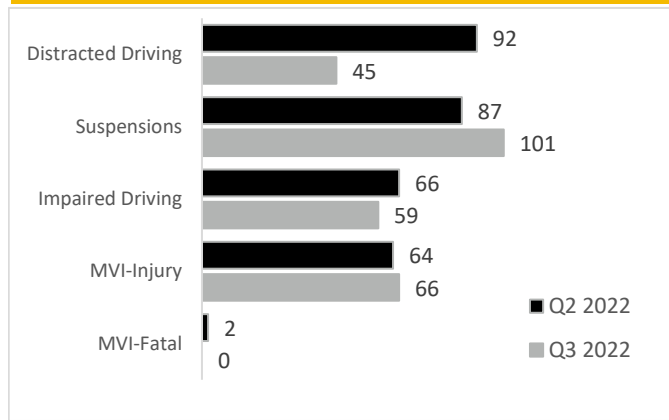
- Community Safety Office (CSO) - Unit N111 Uptown Centre**
  - Have you visited our Community Safety Office at Uptown?
  - Come visit our office to learn about community programs, initiatives, and projects and receive up-to-date access to community resources.
    - To report crimes or incidents, please continue to do so at the Saanich Police Department (760 Vernon Ave).*

- SPD Safe Place Program**
  - This initiative is to support all victims of hate-based crime in our community and encourage the engagement and reporting of incidents to the police.
  - If you are a business or community stakeholder that is interested in joining the SPD Safe Place Program, visit our website [www.spdsafeplace.ca](http://www.spdsafeplace.ca) or email [safeplace@saanichpolice.ca](mailto:safeplace@saanichpolice.ca)

- Securing Your Vehicle**
  - This quarter, 49 of 103 (48%) reported automobile thefts involved cars that were insecure.
  - It is important to lock your doors and keep any valuables out of sight.

Check out our website or find us on social media for more information:  
[www.saanichpolice.ca](http://www.saanichpolice.ca)

### Traffic Incidents                      Non-Criminal Events



### Calls for Service                      Average Priority 1 Response Time\*                      Media

Year to Date	2022		Year to Date	2022		Facebook Followers	Instagram Followers	Twitter Followers	Media Interviews
	Q2	Q3		Q2	Q3				
12,408	6,256	6,446	7m39s	8m07s	7m23	8,702	2,929	25,780	20

\*from time of dispatch to arrival on scene

This report contains several indicators of police performance as well as statistics related to public safety and crime that are not solely influenced by organization performance or police activities but are impacted by a range of factors.